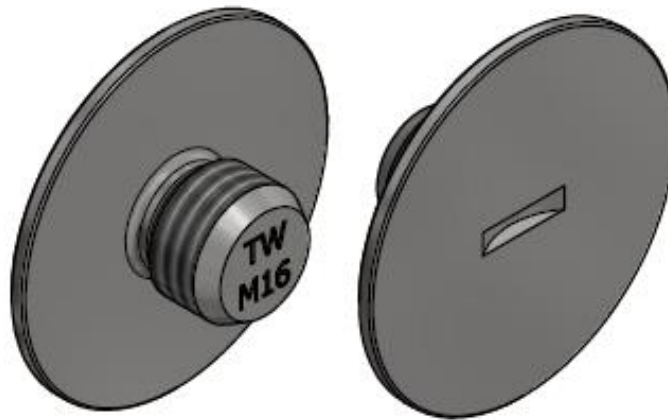


COMMERCIAL DOCUMENTATION

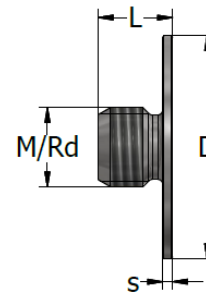
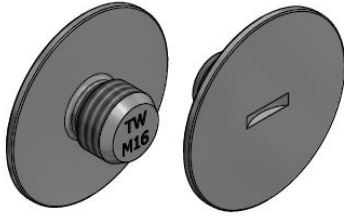


1D - LIFTING SYSTEMS | **TP-02 COVER SEALING CAP**

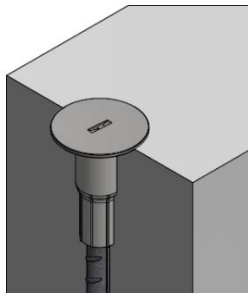


COVER SEALING CAP TP-02

The cover sealing cap is made of stainless steel. Its purpose is to protect the socket and give the concrete element a finished look.



COVER SEALING CAP	Product no.	Thread	Diam. D	L	s
		M/Rd	[mm]	[mm]	[mm]
TP-02 - M/Rd12	61526	12	35	15	2
TP-02 - M/Rd16	61527	16	35	15	2
TP-02 - M/Rd20	61528	20	44	18	2
TP-02 - M/Rd24	61529	24	44	25	2
TP-02 - M/Rd30	61530	30	59	25	2
TP-02 - M/Rd36	61531	36	59	30	2



Mount the cap in the socket after removing the nailing plate.

CONTACT



TERWA is the global supplier for precast and construction solutions with multiple offices around the world. With all our staff, partners and agents, we are happy to provide all construction and precast companies who work in the building industry with full service and 100% support.

TERWA CONSTRUCTION GROUP

Terwa Construction Netherlands (HQ)

Global Sales & Distribution
Kamerlingh Onneslaan 1-3
3401 MZ IJsselstein
The Netherlands
T +31-(0)30 699 13 29
F +31-(0)30 220 10 77
E info@terwa.com

Terwa Construction Central East Europe

Sales & Distribution
Strada Sânzieni
507075 Ghimbav
Romania
T +40 372 611 576
E info@terwa.com

Terwa Construction Poland

Sales & Distribution
Ul. Cicha 5 lok. 4
00-353 Warszawa
Poland
E info@terwa.com

Terwa Construction India & Middle East

Sales & Distribution
India
T +91 89 687 000 41
E info@terwa.com

Terwa Construction China

Sales & distribution
5F 504, No. 101 Chuanchang road
PRC, 200032, Shanghai
China
E info@terwa.com

ALL SPECIFICATIONS CAN BE CHANGED WITHOUT PREVIOUS NOTICE.

DISCLAIMER

Terwa B.V. is not liable for deviations due to wear of the products it has delivered. Neither is Terwa B.V. liable for damage due to inaccurate and/or improper handling and use of the products it has delivered and/or use of same for purposes other than those intended.

Terwa B.V.'s responsibility is furthermore limited in accordance with article 13 of the "Metaalunie" conditions, which are applicable for all Terwa B.V. deliveries. The user is responsible for ensuring compliance with all applicable copyright laws. Without limiting the rights under copyright, no part of this documentation may be reproduced, stored in or introduced into a retrieval system, or transmitted in any form or by any means (electronic, mechanical, photocopying, recording, or otherwise), or for any purpose, without the express written permission of Terwa B.V.